

# Inspirations

A NEWSLETTER OF INSPIRING IDEAS FOR HOME AND GARDEN • FEBRUARY/MARCH 2014

## Where do you find *your* inspiration?

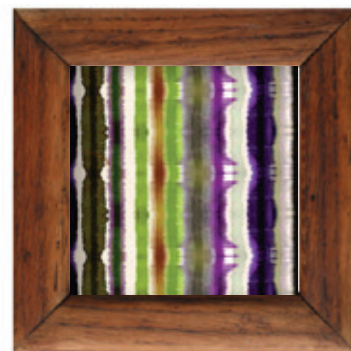
Welcome ...

To the first 2014 issue of  
*Inspirations!*

In this issue I am excited to bring to you ideas from a recent kitchen remodel and sunroom addition that I have completed for my clients, as well as trends and tips for other areas of the home.

Also, I welcome my colleague, Interior Designer Emily Hughes, who will have a regular article in upcoming issues.

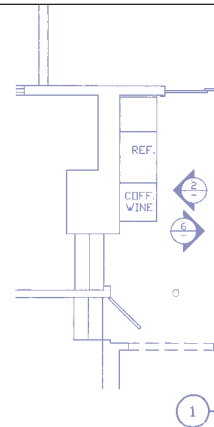
—Rhonda—



**W**hat do these new colorful fabrics, showcased in elegant picture frames, have in common? The answer is: there is an exciting trend in the interior design world, introduced lately for fabrics printed in “painterly” designs. So you may ask, what is a painterly design? The Merriam-Webster dictionary defines the word painterly as: “pān-tər-lē: suggesting a painting; made the way that reminds you of a painting... without linear edges”. As an interior designer and occasional artist, I am enthralled with all the possibilities of these artistic fabrics that may be the Inspiration of a client’s new room and color scheme!



# Iowa City Kitchen Remodel and Sunroom Addition



A major kitchen re-model, while clients are living in their home, is not for the faint of heart, as the water and electricity may be off for days at a time.

**I**n 1976, a young couple purchased a one-and-a-half story home near Rochester and 1st Avenue in Iowa City, and raised their family there. Since then, they have expanded the front living room by 6 feet with a wall of windows and skylights, re-modeled the lower level after a surprise attack by termites, and last fall, decided to gut and remodel their kitchen for the second time. Of course, one thing leads to another—and they decided to add a sunroom beyond the kitchen, which had been a large deck overlooking their wooded ravine.

My clients and I interviewed two local cabinet companies and they chose Steve Johannes of Johannes Architectural Woodworking to design and build the cabinets, Slagers for appliances, Granite Custom Design for their counter-tops, and Bachmeiers Carpet One installed their limestone floors.

A major kitchen re-model, while clients are living in their home, is not for the faint of heart, as the water and electricity may be off for days at a time. However, we strategically planned the most inconvenient days around the clients' trip to Italy last fall, and coordinated a superior transformation for a husband and wife who love to cook and entertain, and who now enjoy both the pleasure of their new kitchen, and an additional 3-season room for themselves, family, and guests!

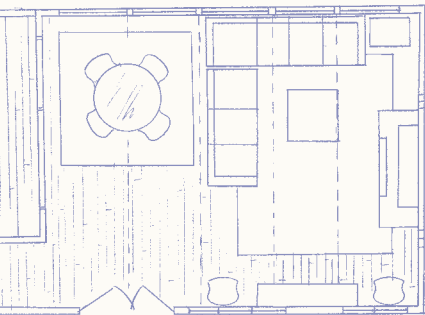
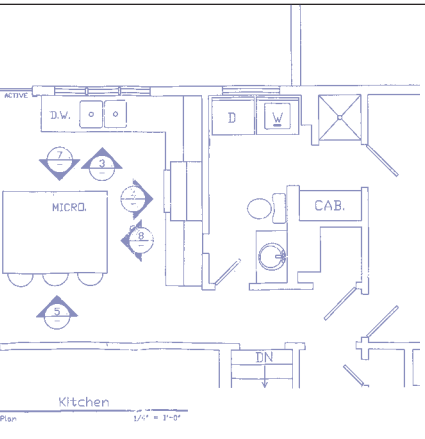


**Top left:** My clients' kitchen, circa 1981.

**Bottom and middle:** Completed kitchen's remodel with new island, lighting, and limestone floors.

**Above:** New 3-season porch replaces the former deck.





**It's all about the details**



Indoor-outdoor sectional for the 3-season room above by Lane Ventures, available at **The Mansion**.



Kitchen counters and sunroom fireplace in Azurite granite from Granite Custom Design in Iowa City.



Indoor-outdoor polypropylene area rug by Jaipur, available at **The Mansion**.

# REINVENTION

**MAPS AS ART**

Maps, framed on walls as art, have been enjoyed for centuries. On a recent buying trip to the High Point, N.C. Furniture and Accessory Market, I was inspired by a Soicher-Marin Co. vintage map-print of Paris, and we ordered it to display at The Mansion. Lately, researching art ideas for clients, I have found other favorites (see right). Framed map reproductions are available in sepia or gray tones, and others are enhanced with color and appear to be hand-painted.

For clients with children, I have suggested hanging a current map, framed in an inexpensive poster frame, for a playroom or a breakfast room, to help them all keep up with current events in the world, and pique their imagination for travels and adventure!



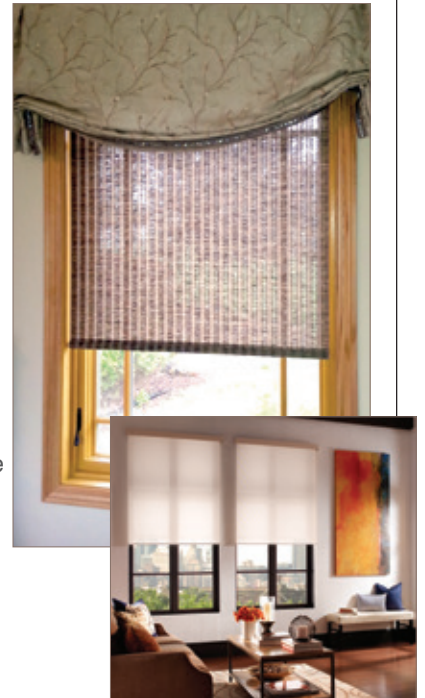
**Right:** Vintage Rome Map 40x40; \$699 at **The Mansion**

**Above:** Vintage Paris Map 58x40; \$1,495 at **The Mansion**

# In THE KNOW

**NEW! Q-MOTION WINDOW SHADES**

This new window shade offers the best of technology and light control and is gaining popularity amongst the custom window treatment options available through The Mansion. QMotion offers a roller shade that can be ordered with or without motorization in a variety of elegant fabrics that can stand alone or be complimented by custom top or side treatments. Some of the fabric options provide translucency while others feature black out and UV protection. Without motorization, QMotion shades open and close effortlessly, with a light pull on the bottom bar. The motorization feature allows this roller shade to work in upper dormers and other hard to reach places. Motorized QMotion shades can be programmed to open and close at specific times for optimum light control and also operate at your command via remote control. A sleek remote can be wall mounted to fit in seamlessly with your other switch plates. QMotion's motorized shades use standard D-cell batteries, which are easy to replace and rarely need to be changed since they are developed with technology that extends battery life up to 5 years or more. Give us a call to see how these functional and stylish shades can enhance your living space!



*by Emily Hughes, Interior Designer at The Mansion*



# Favorite design tips for beautiful, comfortable bedrooms

Whether you want your bedroom to be serene or dramatic, here are tips that I suggest to my clients when decorating a bedroom:

- Choose the key fabric(s) for the comforter, shams and drapery first, then choose the wall color.
- If you want lighter neutrals or pastel paint for walls, test samples on the walls first, as the color may look brighter on the wall than it appears on the sample card.



- Consider upholstered head-boards for quiet and comfort. I have them custom-made in all sizes and fabrics, and they are economical.



- Save expensive designer fabrics for window treatments, dusters, and upholstery, and choose washable duvet covers for the bed.

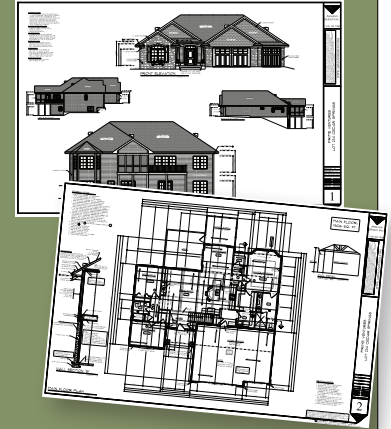
- A chaise may tuck into a spare corner of a room as easily as a chair, and is great for a nap or reading.

- Semainiers are small 7-drawer chests which in French means “weekly”. They were designed centuries ago for keeping lingerie and stockings sorted 7 days a week. Now they are perfect for anything, including jewelry.
- Use a writing desk as a vanity, or instead of a nightstand on one side of the bed.
- Position a wall-mounted TV over a dresser instead of a mirror.

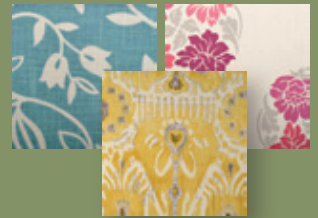


*THE NEXT ISSUE*

Sneak Preview of  
Prime Ventures’ 2014  
Parade Home, under  
construction in Cedar  
Springs, North Liberty



New spring fabric  
introductions



And more!

Know someone  
who may enjoy this  
newsletter?

Please contact:  
Rhonda Staley IIDA  
538 S. Gilbert Street  
THE MANSION  
Iowa City IA 52240  
c. 319-321-2404  
o. 319-338-2830  
rstaley@themansion-  
interiors.com  
www.rhondastaley.com



Inspirations was  
the winner of a  
2013 Award of  
Distinction from the  
Communicator  
Awards