

# InspiraTIONS

A NEWSLETTER OF INSPIRING IDEAS FOR HOME AND GARDEN • JUNE 2014

Welcome ... to the  
June 2014 issue of  
*Inspirations!*

This spring has been very busy with an annual buying trip the April Highpoint, N.C. Home Furnishings market, Parade Homes to furnish, and new fabric trunk shows from our best vendors. In this issue, you will see a sneak preview of two Parade homes, my market trip with Emily Hughes and inspiring new decorating ideas!

—Rhonda—



## Where do you find *your* inspiration?



*In*vigorating! is the best way to describe my last month's buying trip to Highpoint N.C. Mingling with 75,000+ international buyers and interior designers in hundreds of showrooms for four days, all filled with the latest home furnishing items and trends, was exciting and inspirational.

I left there with this impression: color trends shown the most were coral, orange, or turquoise, and the neutrals are creams or whites. The bedding ensemble, "Caroline" in the catalog photo, above, is from Eastern Accents ([www.easternaccents.com](http://www.easternaccents.com)), and it was photographed in the showroom we walked through; it is a perfect example of these bright new colors paired with creams and whites.

The long-time "go-to neutral," gray, was absent unless it was paired with a crayon-bright color, or lots of white.

# 2014 Parade Home at 1885 Tupelo Drive, North Liberty, by Prime Ventures Construction



Soaring great-room  
and kitchen ceilings  
are balanced by  
exposed oak beams  
stained to match  
the walnut-stained  
white-oak,  
quarter-sawn floors.

In August of last year, Prime Ventures' secretary Donna Coblentz emailed me the floor plans and exterior elevations of their 2014 Parade Home. "Get your wheels turning," she wrote. "We would like any of your input for selections for this house." And so, I began the process of interior and exterior material selections. The house, a 6-bedroom ranch with spacious walk-out lower-level, is built on a beautiful wooded lot in Cedar Springs, and will appeal to home-buyers of any age.

The color scheme is light neutrals: Sherwin Williams' Irish Cream wall paint, and Dover White enamel trim paint, which enhance the open floor-plan and sun-light-washed rooms. The kitchen cabinetry is off-white with a caramel glaze. Soaring great-room and kitchen ceilings are balanced by exposed oak beams stained to match the walnut-stained white-oak, quarter-sawn floors. The granite counters and fireplace surround are cream/gold/terra cotta, and the same colors are repeated in the exterior rough stone. The exterior has the same contrasts: light neutral siding and shakes, and for contrast, wood-stained garage doors and shutters.

As I would with any client, I presented the color schemes and materials to the Watts Group in September as the house broke ground. I continued to make the materials selections, often conferring with Brian Watts on details throughout the building process.

Now, decorated with fine furnishings from The Mansion, it is completed and ready for the Iowa City Area Home Builders' Parade of Homes. Be sure to tour this stunning home. Parade dates are May 31, and June 1st, 3rd, 5th, 7th, and 8th.

**Right:** Kitchen and dining room.

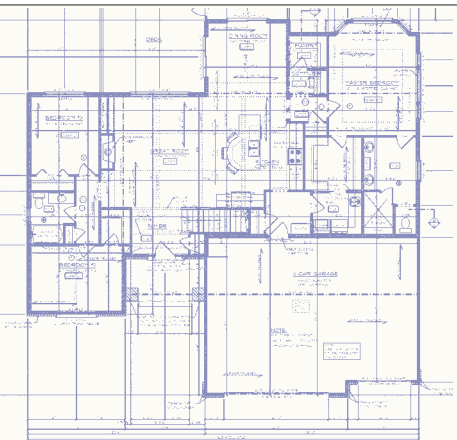
**Far right:** Rhonda and Brian discussing the custom mantle.



# In THE KNOW



House plan by Ahmann Design



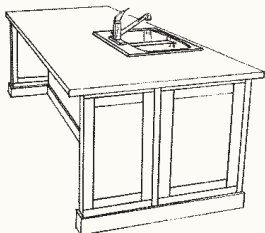
## It's all about the details



Iron and crystal chandelier from **Light Expressions, Coralville.**



Curations upholstered dining chair from **The Mansion.**



Custom-designed kitchen island, Omega-Dynasty Cabinet Co. from **Corridor Kitchens and Baths, North Liberty.**

## NEWS FROM HIGH POINT MARKET

Rhonda & I were fortunate to travel to the High Point Market this spring to observe emerging trends in the design industry. Here are a few tidbits of inspiration to share with you...

We discovered **CR LAINE**, a favorite new upholstery line. With a vast array of fabric, trim & finish selections, this manufacturer is very fashion forward. They also take comfort seriously! We know that our customers will be extremely satisfied every time they sink into a cozy CR LAINE chair or sofa. Notice the pretty tape trim around the skirt of this sofa and the attention grabbing coral chandelier by one of our lighting vendors, **CURREY & CO.**

Alexa Hampton was bringing back 80's Glamour with this rich living room setting at **HICKORY CHAIR.**

These European architecturally inspired pieces by **WENDOVER ART** were a timeless trend in the art category.

**CENTURY FURNITURE** was lighting things up with a fresh, more transitional look. Here I am in one of their fun, smaller scale chairs in a fabulous animal print.

Color Blocking, both on furniture and draperies, was another big trend. Here Rhonda sits in a wingback by **LEATHER CRAFT** that shows contrasting colors applied as a stunning stripe.

Need more inspiration? See additional photos from High Point on Facebook.

*by Emily Hughes, Interior Designer at The Mansion*

**CR LAINE CURREY & CO.** ▶

**HICKORY CHAIR** ▼

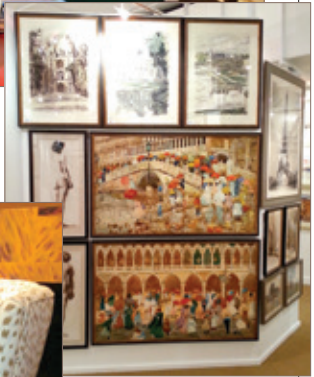


**WENDOVER ART** ▶



**CENTURY FURNITURE** ◀

**LEATHER CRAFT** ▼



# REINVENTION

ONCE-UPON-A-TIME IN 1879, a white Italianate-style mansion was completed on Summit Street in Iowa City. With front-porch corbeled columns, French windows, wood marquetry floors in the formal dining room, and a curving staircase, it was a showplace!

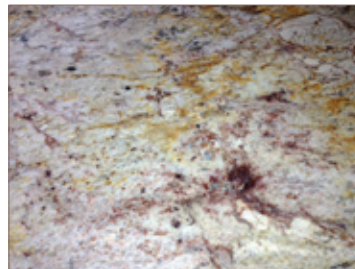
Last year, my client purchased the house, which after 135 years, was in total disrepair. She embarked on the remodeling with Lammers Construction, and Mark Russo for the new kitchen and baths. She was inspired by the curvature of the ceiling in the kitchen, and has continued with scroll motifs in the powder room and formal dining room wallpapers, Enkeboldt carved wood on the cherry kitchen island, and rich den carpeting.

I was privileged to be asked by Katie Lammers and my client to stage the main floor with furnishings from The Mansion for the tour days. Construction is still on-going on the second floor, including removing an unused chimney and adding a new master bath.

The main floor of this home is on the Home Builder's Association Parade of Homes, Saturday May 31, 10:00 AM to 5:00 PM, and Sunday June 1, 12:00 AM to 5:00 PM. You will be dazzled!



Wallpaper from The Mansion



Typhoon Bordeaux granite in kitchen, by Lammers' Construction



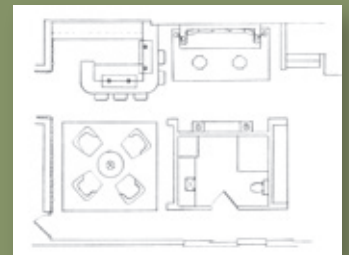
Gilded tin ceiling in the kitchen



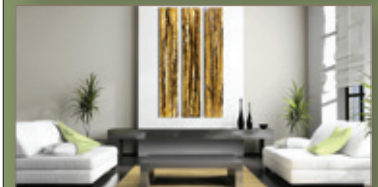
415 Summit Street  
Liz Boeman, artist

THE NEXT ISSUE

Realizing a Dream  
Home in North Liberty,  
Phase 2



Choosing art  
for large spaces



And more!

Know someone  
who may enjoy this  
newsletter?

Please contact:  
Rhonda Staley IIDA  
538 S. Gilbert Street  
THE MANSION  
Iowa City IA 52240  
c. 319-321-2404  
o. 319-338-2830  
rstaley@themansion-  
interiors.com  
www.rhondastaley.com



Inspirations was  
the winner of a  
2013 Award of  
Distinction from the  
Communicator  
Awards