

Inspirations

A NEWSLETTER OF INSPIRING HOME IDEAS • JUNE 2015

Welcome.....to the
June 2015 issue of
Inspirations!

Now that we are finally enjoying warm weather, I am excited to share my newest outdoor project for clients in Ft. Madison, (p. 2-3), and a 2015 Parade of Homes project with trend-setting interiors.

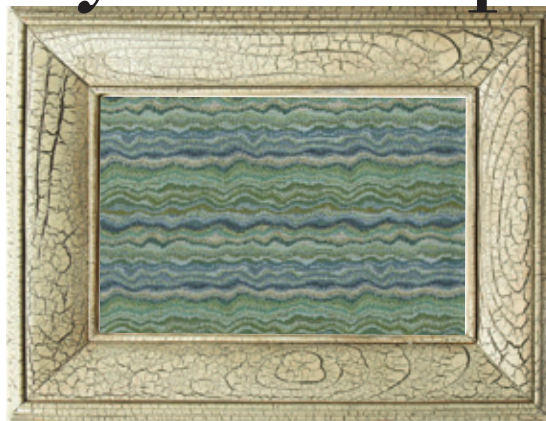
My thanks to The Mansion's Interior designer, Emily Hughes for her "Reinvention" column on page 3, and to my design assistant, Liz Boehman, for her great photography and excellent collaboration with my projects.

Have a wonderful summer!

—Rhonda—



Where do you find *your* inspiration?



Indoor-outdoor fabrics are abundant and popular in today's homes, but they have only been available for a decade or two. In 1961, Sunbrella debuted acrylic fabrics for awnings, and its unique color pigmentation process offered the rich look and feel of cotton, but revolutionized a no-fade, no sun-rot, and stronger fabric.

By the 70's, Sunbrella fabrics had taken over boating and marine fabric needs, and in following years, their manufacturers offered innovative acrylic yarn construction to imitate luxurious interior fabrics. Now, 54 years later, this fabric is widely used by interior designers and consumers for deck, porch, and sunroom furnishings, and for its clean-ability in any room inside the home.

These inspiring fabrics, above, are just a sampling of what is available. (One of these is the accent fabric for my clients' new out-door furniture on p. 2-3.)

An Iowa Family's New Pool and Outdoor-living Project for their Home, on the Banks of the Mississippi River

This project began, not with a typical computer cad drawing from a landscape designer, but from the husband's Drone photos of the property!

Working from Drone photos was a first for me, and the clarity of the photos was instrumental for planning the pool and fire-pit furnishings.

Eleven years ago, I was interviewed by a couple starting to build a European-style home on their acreage overlooking the Mississippi River and Illinois to the east. Their home's façade incorporates brick, stone, copper turrets, multi-colored slate patios, and decorative iron—architectural details thoughtfully chosen with perfect scale, coloring and ageless grace.

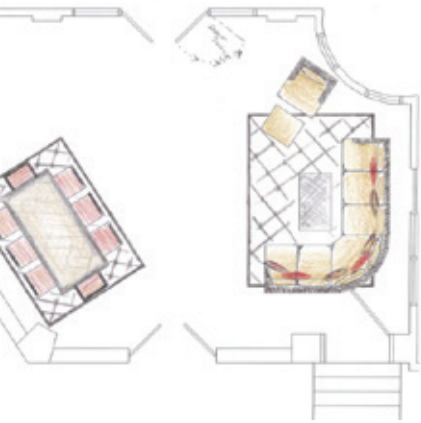
My role since then, has been to plan their interiors and complete each room to the last detail, with flooring, window treatments, furnishings and accessories, year-by-year. Last fall, I was elated to receive a phone call from them for a new project: planning the furnishings for their expansive backyard, new pool, and pool-level screened porch. Just weeks ago, all the furnishings and area rugs were delivered in time for the family to enjoy the first warm weather in their great outdoor spaces.

As in 2004, when the couple envisioned their home's stately exterior and interior, this new river-front pool-scape, cozy fire-pit, and pool-side porch, with expansive seating and dining, is undeniably, an Eastern Iowa masterpiece on the bluffs of the Mississippi River, for their family and friends to enjoy for generations.

PHOTOS BY LIZ BOEMAN



REINVENTION



It's all about the details



Area rug: Indoor-outdoor area rugs by **Surya**.



Dining room set: New Source! **Pavillion Outdoor Furniture**, the Moroccan Collection.



Curved loveseat: 3 curved loveseats by **Lane Ventures** surround the new stone fire pit by the pool.



Pillow: The pillows are in accent colors that repeat the stone and brick of the house and complement the neutral furniture fabrics.

All furnishings available at **The Mansion**

IN WITH THE OLD

Classic Style Reimagined

Classic furniture is making a come back this spring. Consumers are gravitating toward familiar pieces for their home that evoke childhood memories or perhaps our sentimental tendencies.

Spool Furniture

Turned-wood furniture emerged in 16th Century England. In its inception, cabinetmakers used a lathe to shape straight wood into bulbous forms as a way of showing off their woodworking skills. Upon its arrival in Colonial America, the craft became more refined, and spool pieces became popular as an inexpensive but finely made type of furniture. Today spool chairs, end tables, shelves and lamps are popping up everywhere in bold, painted colors that give this look a refreshing twist. The Abacus Relax chair by Noir sports a bold black frame with white cushions that can be complimented with a vibrant throw pillow or inexpensively recovered when you want a new, less neutral look.



\$2006 at The Mansion



Ottoman: \$1198 at The Mansion

Chair: \$2115 at The Mansion

Barcelona Chair by Mies Van Der Rohe

One of the most recognizable chairs of the last century, the Barcelona chair, is renowned for its combination of design and craftsmanship. It was originally designed by Mies Van Der Rohe and Lilly Reich for the International Exposition of 1929, hosted by Barcelona, Spain. This leather chair and ottoman by Lee Industries allude to the sleek styling and materials used in the design of the Barcelona chair.

Management Chair by Charles & Ray Eames

The chairs of the Eames Aluminum Group have been popular since their introduction in 1958. Originally designed with a mesh seat in lounge styles meant for outdoor use, the task chair version is now commonly upholstered in a variety of leathers. The graceful silhouette of this desk chair lends itself to both workplace and home interiors. The Mansion reupholstered this padded version in a vibrant leopard print by Duralee to give it a more stylized, residential feel. Wherever you place them, these chairs make a statement of enduring design excellence.



\$1830 at The Mansion

European Influence

Classically styled, transitional furniture with European influences fits well in today's eclectic, relaxed interiors. Modeled after the most popular café chair in Europe, these stainless steel, x-back counter stools lend an industrial, modernized look to the bentwood tradition popularized by Thonet in 19th-century Austria.

Louis XV-styled furniture offers a useful sturdiness that is complimented by elegant, curvilinear design elements. The Mansion offers Round-back, Louis XV dining chairs from several vendors. Shown here is a tufted version, upholstered in charcoal wool on a hand-carved, weathered oak frame with hand-turned legs, from Curations Limited.



By Emily Hughes, Interior Designer at The Mansion.



\$204 at The Mansion

\$440 at The Mansion

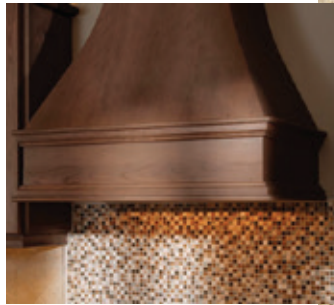
Parade Home 2015 Preview

In April, I was on-schedule with a Watts Group Parade House in Cedar Springs, North Liberty, a 4-bedroom one story with breathtaking wooded views. Then I received a call from the builder that the home had been purchased and the new homeowners would be moving in at the end of May, ahead of the Parade of Homes. Even though I was looking forward to seeing the home on tour after months of making selections, it was a win-win for the builder and new home owners; congratulations to both of you!

Although the home won't be on the Parade, I want to share some of the trend-setting features that made it outstanding:

The kitchen cabinets are by Omega Dynasty from Corridor Kitchens, N. Liberty. Their new finish, Riverstone, and the Cambria quartz counters' "Windermere" were the inspiration that started the color scheme of the home. I repeated the driftwood-colored stain for the wood floors, and used limestone tile and Oceanside glass from Randy's for the backsplash.

The new furniture and art I had planned for the house incorporated a "what-was-old-is-new-again appeal" with a slip-covered-look sofa, 7'-wide ancient map, leather Barcelona chair, rustic trestle table, and metal barstools in a century-old bentwood design. All furnishings are now on display and available at The Mansion.



Kitchen hood- "Omega Dynasty cabinets, Riverstone finish"

Cambrian counter- "Windermere"

Sofa by Lee Industries \$2895

Celestial map, 7' x 5' \$3750

Trestle dining table \$2625



Favorite Decorating Tips for the Great Outdoors

Choose outdoor furniture with cushions that are constructed to drip dry from rain or wet bathing suits.

Light neutral fabrics for cushions will compliment water backgrounds such as pools or lake views, as well as the greens of trees and grass. Use colorful pillows and outdoor rugs for pops of color.

Stay with a neutral theme for containers for plants that complements your home's exterior colors; let the flowers bring in summer's colors.

Hang washable drapery panels from the corners of your porch or patio cover for shade, privacy, and a luxurious feeling.



In THE NEXT ISSUE

New, and continuing remodeling projects of two clients, with exciting and inspirational details to share.

Also, new photos of this issue's feature article, the Ft. Madison estate, after their final landscaping is completed.

And more!

Questions? Comments?

Please contact me,
Rhonda Staley IIDA
319-338-2830
The Mansion, Iowa City
rstaley@themansion-interiors.com
www.rhondastaley.com

Visit my projects on Houzz at:
houzz.com/pro/intdsigner/
rhonda-staley-iida
And my weekly posts on
Facebook at:
facebook.com/rhondastaleydesign