

InspiraTIONS

A NEWSLETTER OF INSPIRING HOME IDEAS • OCTOBER 2014

Welcome ... to the
October 2014 issue of
Inspirations!

Summers are eventful
as we try to make time
for vacations, reunions,
gardening, and more.

Many of my clients
included home-building,
remodeling, and deco-
rating to their summer
“to-do” list as well!

In this issue, read
about a client’s newly-
built bungalow, and
follow the progress of
the large remodel and
addition I featured in
an earlier issue.

–Rhonda–



Where do you find *your* inspiration?



This year, the color purple has been very popular in both fashion and interior design, and although it may seem a “new” color to many of you, over the years I have had several clients requesting for purple to start a color scheme.

For one of my clients, purple will be the accent color for their new master bedroom and bath addition, which otherwise is in light, neutral tones. The grass-cloth wallpaper (above) is a backdrop for new artwork featuring purples, and the rich velvet (above) will be part of their luxurious bedding ensemble. Other purple fabrics shown are a watercolor-type motif cotton print, and an exotic embroidered paisley from India.

New Craftsman-Style Bungalow on the Peninsula, In Iowa City by Prime Ventures Construction



My client, the builder and I collaborated daily on all details, from finalizing her blue prints in February through her move-in in August.

At the end of a wooded cul-de-sac, this newly completed custom home's exterior is reminiscent of the Craftsman style architecture from decades ago, but my client and I chose to update her home with crisp, light coloring for both the exterior and interior.

Dry-stack stone in limestone and light-gray colors set the exterior color-scheme, supported by cream and taupe siding, dark taupe shutters and front door, and white front porch columns and trim.

Once inside, the house "lives big" despite a main floor of only 1476 sq. ft. The soaring cathedral ceiling in the great room, kitchen and dining areas, and the large bay windows allow for ample light throughout. White cabinetry in the kitchen and entertainment center is complimented by wide plank maple floors. The counters are striking in black granite with copper flecks, and complimented by copper glass tile backsplashes. Cream-colored interior paint, contemporary glass light fixtures, and transitional furnishings make a perfect personal statement for my client.

My client, the builder and I collaborated daily on all details, from finalizing her blue prints in February through her move-in in August.

Below: The living area features a fireplace surround of copper and glass mosaic tiles, plantation shutters, with fun and functional furnishings.

Right: Upholstered dining chairs are comfortable and provide extra living room seating. The stunning chandelier is my client's favorite purchase for her retirement home.





House plan by Ahmann Design

It's all about the details



"Bubbles" chandelier by Cyann Design at The Mansion.



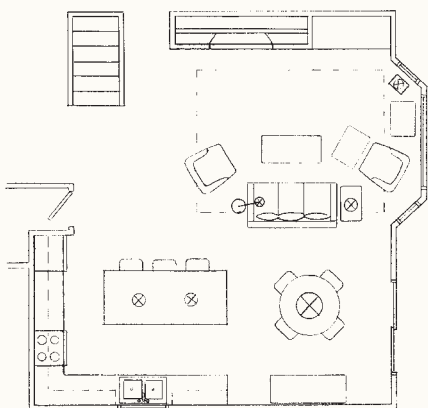
Exterior Dry Stack Stone Prestige at Iowa Stone Supply, Hiawatha.



Contemporary sofa in cream chenille by CR Lane, at The Mansion.



Gold-silver table by Caracole, at The Mansion.



Floor plan

In THE KNOW

WALL DECOR

When planning your interiors, don't overlook the impact that wall decor provides. Here are some tips for using art to enhance your interior design scheme.

CHOOSE WHAT YOU LOVE.

Look at a lot of art to select pieces that appeal to you. The Mansion has catalogs and websites full of framed art, wrapped canvases, original oils, wall sculptures, mirrors and even antler trophies that we can provide and help hang upon delivery.

CONSIDER HOW IT WILL FIT IN.

Examine the palette in your room. Pick one or two of the bold colors in your room and select art that includes these colors to create harmony. Think about proportion and choose art that will fit above a particular piece of furniture or fill an empty wall. Choose frames that coordinate with the style of the art and the furniture in your room, more ornate for traditional interiors or bold and clean lined for a modern aesthetic.

HOW CAN YOU DISPLAY IT BEST?

Generally speaking, art is hung with the center of the art, or grouping of art, at eye level. When hanging art above a piece of furniture, you want a few inches of clear wall space between the bottom of the art and the top of the furniture, but be sure to consider the ceiling height as well.

ACCENT YOUR ARTWORK.

Properly lighting your art brings out the color and impact of the piece. Flank it with a pair of lamps and choose accessories that compliment the art's color and texture. Add emphasis to your art by hanging a picture light over it to wash the piece with light. To create a wall full of art, group similar items, such as botanicals with garden plans or unify different types of art by choosing one mat and frame to use for all of the pieces in the grouping.

Come into The Mansion to get our designers' help personalizing and bringing a whole new life to your interiors with art!

by Emily Hughes, Interior Designer at The Mansion



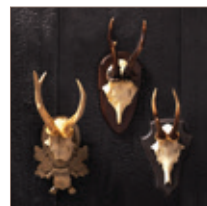
Golden Flower Petals Mirror \$550 at The Mansion



Picture Lights \$195 and up



Antler Trophies \$46 each at The Mansion



Berthaud Botanical \$1,318 at The Mansion



Glory Day \$675 at The Mansion

Green & Blue Abstract \$2,244 at The Mansion



Favorite Interior Design Tips for a Fantastic Lower Level

In my November 2013 *Inspirations* newsletter, I featured a house remodeling project underway with my clients on their North Liberty acreage. The nearly completed, expanded and remodeled lower level is especially exceptional. Here are important tips from this inviting space:

Layout: The layout of the walls allows for an easy flow for large parties, and the wide openings between rooms let natural light shine throughout. There are sitting areas for conversation, a billiard area, media room, bar, and a glass-enclosed hot-tub room with vented gas grill.

Furnishings: In the wine-tasting sitting area, 4 contemporary swivel chairs allow for turning to watch a TV over the bar, or joining into conversation from the bar area. Also, the alder wood game table in the center of the chairs adjusts from cocktail-to-dining-height, and is perfect for playing games. The 2 settees by the bar offer lounge-type seating.

Lighting: Besides carefully placed recessed lights, a custom iron-and-mica lantern adds a warm mood to the 11' ceiling over the game table.

Wall color: SW 7575 "Chopsticks" wall paint is a match to the limestone walls and keeps the basement light on the dreariest day.

Floors: Engineered wood floors in all areas with colorful rugs under sitting areas are ideal for upkeep, and lowering allergies.



THE NEXT ISSUE

Realizing a Dream
Home in North Liberty:
designing an indoor sport-
court and weight-room



Contemporary living
room remodel and
redecorating;
before and after



And more!

Know someone
who may enjoy this
newsletter?

Please contact:
Rhonda Staley IIDA
538 S. Gilbert Street
THE MANSION
Iowa City IA 52240
c. 319-321-2404
o. 319-338-2830
rstaley@themansion-
interiors.com
www.rhondastaley.com



Inspirations was the
winner of an Award
of Distinction from
the Communicator
Awards